



BioVigilant

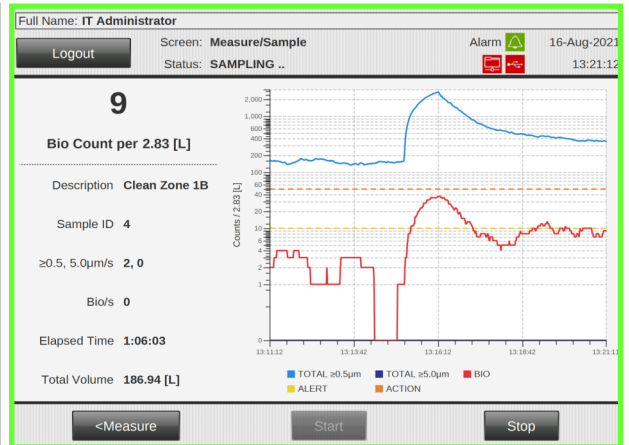
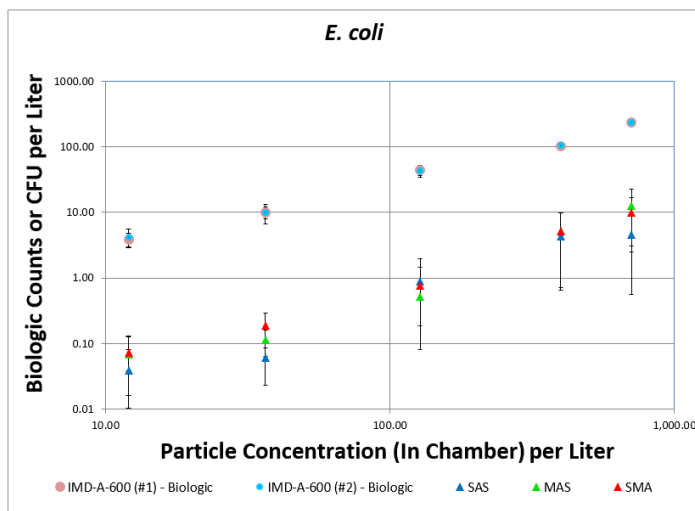
Instantaneous Microbial Detection

IMD-A-600

Rapid Biologic Detection System for Isolators

The IMD-A-600 Real-time, Rapid Biologic Detection System for Environmental Air Monitoring can continuously guard aseptic pharmaceutical isolator environments to instantly warn when microbes are present

- Real-time operation
- Measures particle size and biologic status simultaneously
- Immediate results without staining or reagents
- Continuous monitoring, or by specified sample duration or volume
- Visual status indicator
- Flexible communications interface for networking
- Vertical or horizontal inlet options
- Optional on-board display



www.BioVigilant.com

azbil

2005 W. Ruthrauff Road, Suite 151 ▪ Tucson AZ 85705
Telephone (520) 292-2342 ▪ Fax (520) 292-2365

All information contained in this data sheet is being presented for informational purposes only, and is subject to change without notice.

Technical Specifications

Detection method:	Optical, Mie Scatter (particle detection and size) Optical, Auto-fluorescence (biologic status)	Air outlet filtering:	HEPA filtering (Internal)
Biologic detection capability:	Vegetative cells, bacterial spores	Light source:	405nm laser
Incubation time:	None required	Detectors:	(1) Photodiode, (2) Photo Multiplier Tubes
Particle size range:	0.5µm to ≥5µm	Communications output options:	(3) Ethernet 10/100-base T/ Modbus/TCP (2) USB ports (1) VGA
Particle sizing bins:	Grouped by size into two bins: ≥ 0.5µm ≥ 5µm	User interface:	Optional onboard eight-inch 20.3 cm) LCD touch screen (compatible with USB mouse and USB keyboard)
Sample flow rate:	2.83 L/min. (0.1 CFM) +/- 5%		Remote access and control via network
Sampling modes:	Continuous or Point sampling for specified sample duration or volume	Software:	CentOS, Oracle Java JDK, Fedora, IMD-A Software
System dimensions:	21" W x 15" H x 10" D (53cm x 38cm x 25cm)	Data export:	CSV, PDF
Weight:	51 lbs (112 kg)	Languages supported:	English
Enclosure material:	316 stainless steel	Regulatory compliance:	TUV IEC61010-1 CDRH EMC 2014/30/EU LVD 2014/35/EU WEEE 2012/19/EU
Operating temperature range:	10-35 degrees Celsius	Accessories included:	Inlet HEPA filter Inlet and outlet caps Enclosure key
Operating humidity range:	10-85% RH Non-condensing	Options:	Onboard display (described above) A02120 Terminal I/O Box Isokinetic Probe
Power requirements:	100-240 VAC ±10%, 50-60 Hz, Overvoltage category II		
Power consumption:	65 watts, max.		

The azbil logo, the BioVigilant logo, BioVigilant, instantaneous microbial detection, and IMD-A, are trademarks of Azbil Corporation in the United States and/or other countries. Other names or brands may be the property of others.
LI031 October 4, 2021